



EPO STATION

FOR ALL SIEMENS PET/CT SCANNERS

PRODUCT OVERVIEW

Designed for Siemens PET/CT installations with up to 4 Normally Closed (N/C) and 1 Normally Open (N/O) contacts. The N/O contact controls the main breaker shunt trip, while the N/C contacts manage Siemens equipment and UPS EPO circuits. Features push-to-activate, twist-to-reset operation for reliable emergency shutdown in medical imaging environments.

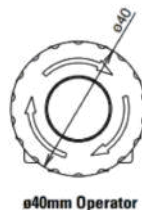
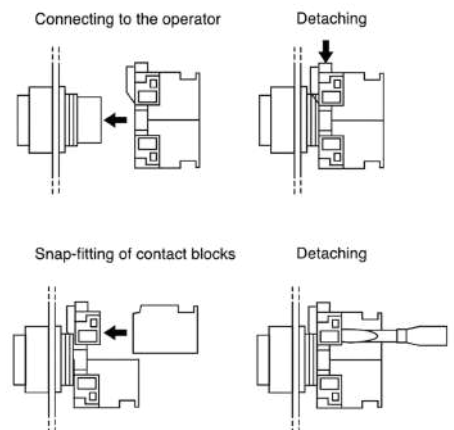
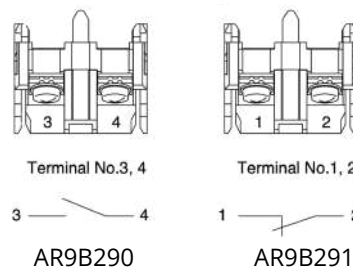
TECHNICAL DATA	
Contact Rating	6 AMPS @ 600 VAC
Button Size	40mm Mushroom
Mounting Box	Standard single gang (min. 2.25" depth)
Mounting Hole	22mm
Wire Connections	Screw terminals
Panel Cutout (approx.)	3.2"
Panel Thickness	0.18 to 6 mm
Terminal Screw	M3
Overall Dimensions (approx.)	Refer to diagrams for details (e.g., height 4.72", width 3.2")



KEY SPECIFICATIONS

- **Customizable Contacts:** Includes up to six sets of contacts – combinations of N/C & N/O for UPS, Siemens equipment & dry contacts as needed per project specifications.
- **Activation Mechanism:** Push to activate and twist to reset for intuitive operation.
- **Contact Material:** Gold-plated silver contacts for enhanced conductivity and durability.
- **Mounting:** Fits on a standard single gang box with a minimum depth of 2.25 inches.
- **Button Design:** 40mm mushroom button for easy identification and access.
- **Wiring:** Screw terminal wire connections for secure installation.
- **Mounting Hole:** Requires a 22mm mounting hole.

TERMINAL LAYOUT



COMPLIANCE AND CERTIFICATIONS

- UL Listed to U.S. and Canadian safety standards.
- IEC60947-5-1
- EN60947-5-1
- IEC60947-5-5
- EN60947-5-5
- UL508
- CSA C22.2 No. 14

INSTALLATION NOTES

1. Mount the station on a standard single gang box.
2. Ensure the 22mm hole is prepared for the button.
3. Connect wires via screw terminals, observing N/O for shunt trip and N/C for other circuits.

** The station is designed for indoor use in controlled environments typical of medical facilities.



For More Information
www.xraylightingcontrol.com

